



# Team Rector

The Parish of  
Radipole  
&  
Melcombe Regis  
with Chickerell  
Weymouth, Dorset



# Contents

<b>Introduction by the Bishop of Sherborne</b> .....	<b>3</b>
<b>Welcome</b> .....	<b>5</b>
<b>Who are we praying for?</b> .....	<b>6</b>
<b>About Weymouth</b> .....	<b>7</b>
<b>Meet the Team</b> .....	<b>8</b>
<b>Radipole District</b> .....	<b>9</b>
<b>Emmanuel District</b> .....	<b>14</b>
<b>St Mary's Chickerell District</b> .....	<b>15</b>
<b>St Mary's Town Centre and District</b> .....	<b>16</b>
<b>St John's District</b> .....	<b>17</b>
<b>The Team Ministry</b> .....	<b>18</b>
<b>Hope House</b> .....	<b>20</b>
<b>Deanery</b> .....	<b>21</b>
<b>Working in the Town</b> .....	<b>22</b>
<b>Living in Love &amp; Faith</b> .....	<b>23</b>
<b>Summary</b> .....	<b>24</b>
<b>Appendix:</b>	
<b>A - The Rector's House</b> .....	<b>25</b>
<b>B - Statistics &amp; Accounts</b> .....	<b>26</b>
<b>C - Parish Service Matrix</b> .....	<b>27</b>



## Introduction to the Vacancy by the Bishop of Sherborne



This post offers an excellent opportunity for the right candidate to bring their own skills and leadership gifts to a varied, developing and welcoming team and deanery, where collaborative ministry between parishes and within the town is essential to build on a huge number of opportunities. We are seeking a priest in the evangelical tradition to lead a lively and experienced team of lay and ordained across a large part of Weymouth.

The Team Ministry is organised so that each Team Vicar has care of specific churches, with the Team Rector having care of St Ann's and St Aldhelm's. In recent years particular churches have offered something to the whole team, be it town centre ministry, facilities for children and young people, with St Aldhelm's acting as a hub and meeting place for the whole benefice.

The Team Rector will come in at an exciting time, with the chance to shape resourcing across the team to grow it in new directions, helped by the diocesan strategy of 'Making Jesus Known' with its emphasis on outreach to missing generations, areas of social need and children and young people, through schools and youth work. This initiative involves the whole deanery in working together.

Weymouth itself is a very mixed community, there have always been good ecumenical relationships across the town, meeting specific needs including debt counselling, street pastors and food banks, all backed up with prayer and fellowship. More recently the local clergy have supported and befriended the refugees aboard the Bibby Stockholm, Afghan families making their home in the UK as well as acting as chaplains to local schools.

The deanery is a varied one. The evangelical roots of the Radipole Team has a significant place alongside the more liberal catholic, and anglo-catholic parishes. The new Team Rector will need to be an important colleague to others and an enabler of mission in all its joyful diversity.

The Team enjoys both a seaside and a town outlook, which gives considerable opportunities for new initiatives, as well as growing existing congregations. The Team Rector needs to be a leader of mission, as well as a teacher and enabler of others, bringing to life the gifts of all those around whilst supporting others in their own leadership. The joy of any team is its unity and diversity and someone who appreciates both will feel at home here.

This post offers much for those who enjoy being near the coast. There is plenty to do for all the family. Further afield are Dorchester, Bridport, and the Jurassic Coast and in the other direction Purbeck. Road links between Weymouth and Dorset and the West Country are relatively good (remember this is 'slow Dorset'!). Weymouth station provides regular trains to London and the south coast.

The Weymouth deanery continues to change and evolve following pastoral changes, moves and retirements. It is in good heart, with a new Rural Dean and active lay leadership. The aim is to create a supportive environment for all clergy and lay leaders, to develop local training and to encourage

benefices to work together as much as possible for the good of the wider area. There are a number of active retired priests in the deanery who get involved in the life of their local church and offer cover, and their gifts, when required.

We are looking for an experienced leader with the resource to build on all that is already happening, and who can see the huge potential of working with others to make a difference.

For further information please contact one of the Team Vicars Revd Jo Haine (07432 222645) or Revd Tom Coopey (07771 360147), the Archdeacon of Sherborne, the Ven Penny Sayer (01258 444521) or myself (01747 811960).

+Karen



## Welcome!

We are an open evangelical parish, open to the Holy Spirit, committed to mission and excited about what God is doing in our churches and community.

Situated in the coastal town of Weymouth, we are a Parish of six churches with a clergy team of a Team Rector and two experienced Team Vicars; Revd Jo Haine and Revd Tom Coopey. Each clergy team member leads two churches.

We currently have a Curate based at Emmanuel and St Mary's Chickerell with the Training Incumbent Jo. We also employ a Lay Town Centre Chaplain, a full-time Parish Youth Worker and two part-time Children's and Families workers.

So, together with a strong lay ministry team and several Licensed Lay Ministers (Readers), we oversee six churches serving contrasting areas of our town.

We are looking forward to welcoming a new Team Rector to be part of our team as we work together to make Jesus known in Weymouth.

We are looking for someone who will lead us as we journey together in mission and ministry underpinned by the belief that as a Parish we are stronger together yet with individual character as reflected in a range of worship styles.

This Profile describes how we work and the town in which we live. The Profile emphasises the St. Aldhelm's and St. Ann's churches which make up the Radipole District because the Team Rector will be the Vicar of these churches. St Aldhelm's and St Ann's have a long history of working closely together and you can find out more as you read on. The Profile also includes a summary of the other four churches in the Parish and other areas of shared mission.

For more information please look at the parish website: <https://ramr.church>

## Who Are We Praying For?

We are looking for someone with confidence and enthusiasm to; lead and inspire missional imagination across the Team, help us to look forward, develop fresh vision and be united in working together for our town and its communities.

So - we are prayerfully seeking someone who is:

- at home and comfortable in an open evangelical and charismatic tradition which fully affirms and celebrates the ministry of women and men at every level of leadership.
- familiar with and generous towards a breadth of worship styles.
- committed to a ministry with Word and Spirit at its heart.
- committed to the Bible and a passionate and competent Bible teacher and preacher.
- open to the Holy Spirit and able to lead and encourage churches in charismatic ministry and mission.
- a visionary leader with a deep and infectious love for God and passion for the local church.
- proven to be an effective leader of a local church.
- able to think strategically and imaginatively about mission and ministry across the Parish.
- able to work effectively, supportively and collaboratively within our experienced clergy team and wider staff team.
- a natural encourager and enabler of others.
- a proven leader of effective mission and evangelism.



## Parish Profile: About Weymouth



Weymouth is a seaside town and popular holiday destination on the South coast in Dorset. It has an award-winning sandy beach overlooked by a Georgian seafront, a picturesque working harbour and a decent sized town centre with a good number of cafes, bars and restaurants. Weymouth is at the heart of the stunning Jurassic Coast with the South West coast path, Isle of Portland and Chesil beach all in close proximity. Popular spots such as Durdle Door, Lulworth Cove, Abbotsbury and West Bay are also not far away.



Weymouth has a fascinating maritime, military and political history – all of which can be explored around the town, at the historic Nothe Fort and local museums. Weymouth hosts a range of music and sporting events, festivals and firework displays throughout the year and a big Carnival every August. The combination of the beach, town, harbour and nearby countryside mean that Weymouth has lots to offer. There is no shortage of nice things to do on a day off!



In terms of local facilities there is a Community Hospital in the Parish and large County Hospital in Dorchester. The Primary schools in the Parish have good reputations as do the local secondary schools and Weymouth College. Weymouth has a good library, leisure centre, numerous large supermarkets and a good number of shops both in town and in two retail parks.



The demographic is increasingly diverse with some affluent areas and areas of significant deprivation. Weymouth has some of the problems typical of seaside towns, including areas of social and economic deprivation, seasonal employment, housing challenges, lack of social, youth and community provision and inadequate care systems for asylum seekers and rough sleepers. Local churches are key players in seeking to address some of these issues in a variety of ways.



Living in Weymouth means being surrounded by both natural beauty and social challenges. There is no shortage of things to do and enjoy and plenty of opportunity for the church to make a difference.



It's a great place to live and work.

To explore more click below:

[We Are Weymouth - Visitor Information, What's On, Places to Stay and Things to Do in Weymouth, Dorset, UK](#)

## Meet the Team



Rev'd Jo Haine



Rev'd Tom Coopey



Rev'd Dan Harland



Neil Biles



Joe Hobday



Susie Coopey



Laura Lark

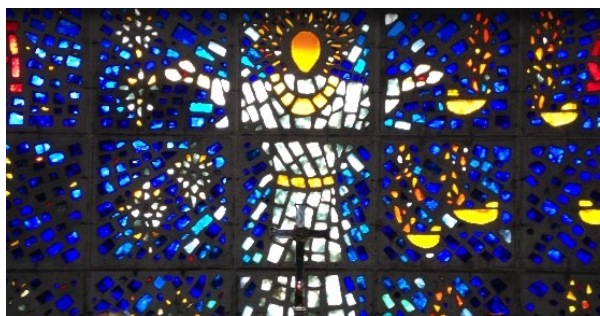


Trudy Dickson

<b>Team Rector</b> <b>(St Aldhelm's &amp; St Ann's)</b>	Position currently vacant
<b>Rural Dean &amp; Team Vicar</b> <b>(Emmanuel &amp; St Mary's Chickerell)</b>	The Rev'd Jo Haine
<b>Team Vicar</b> <b>(St John's &amp; St Mary's Town Centre)</b>	Rev'd Tom Coopey
<b>Curate</b> <b>(Emmanuel &amp; St Mary's Chickerell)</b>	Rev'd Dan Harland
<b>Town Centre Chaplain</b>	Neil Biles
<b>Parish Youth Worker</b>	Joe Hobday
<b>Children's &amp; Families Workers</b> <b>(St John's &amp; Radipole)</b>	Susie Coopey & Laura Lark
<b>Parish Administrator</b>	Trudy Dickson
<b>Retired Clergy</b>	Rev'ds John Lewis, Anni Douglas, Malcolm Millard, Paul Selley, Richard Simmons, Geoff Hebborn, Margaret Baker, Eugenia Adoyo and Dick Luther
<b>Licensed Lay Ministers</b>	Donna Smith, Richard Pendrey, Shirley Evans-Jones and Carl Whitehouse.



## Radipole District - Welcome to St Aldhelm's and St Ann's Churches



The Radipole District consists of St Ann's and St Aldhelm's Churches at which you will find a warm welcome. We are committed to hospitality as people join us for worship from all sorts of church backgrounds and none. Our welcomers make it their business to get to know people and help them feel comfortable and able to worship. For the hungry there is Breakfast@9 on a Sunday and there are other opportunities throughout the week. We try to be supportive and offer opportunities for spiritual and personal growth, through building friendship, invitations to join life groups and Alpha courses and finding ways to contribute to the life of our community. We are also very determined to maintain our missional commitments with a range of mission partners and through the way we organise ourselves. We recognise that we have been so blessed by God, so loved by him that he sent Jesus to us, that we can only respond ourselves in love - to God, to one another and to our community where we try to serve him. We would love it if you felt the same way and were prepared to join us on our journey as our Rector, our leader and pastor. If it helps your decision - one of our newest members of St Aldhelm's, who came to us from another church, said that he has been going elsewhere for years, but always reluctantly. Now that he has joined St Aldhelm's he says, 'Yes! It's Sunday, we can go to church!' because he felt so welcome, included and now feels a sense of purpose. The wonderful thing is he felt comfortable enough to announce this from the front at a recent service.



**St. Aldhelm's** is in a built-up residential area with several care homes, a nursing home, three supermarkets and a trading estate. The original building was extended in 1982 with a lounge, kitchen and toilets and pews replaced with chairs to seat 300 people. It was recently awarded the A Rocha Silver Eco Award. An old church hall was replaced with the Church Centre (page 19) in 2012, built to serve church *and* community. It is a wonderful facility, connected directly to the church with a fully equipped kitchens, toilets and parking. It is very well used, open every day and attracts social and business as well as church use.

**Radipole District** is the district for which the Team Rector has pastoral responsibility. Lying on the outskirts of Weymouth it straddles a busy main road served by buses to Dorchester. There are three congregations - one at St. Ann's and two at St Aldhelm's with additional monthly town-wide Encounter services at St. Aldhelm's. During the vacancy we are very fortunate to have benefited from strong lay leadership and our faithful retired clergy but are really looking forward to our team being completed with a new Rector!

## Radipole District



**St. Ann's** is a 13<sup>th</sup> century grade 2\* listed building, situated about half a mile from St. Aldhelm's church, in a slightly more rural setting. It offers a traditional Sunday morning service, using the Book of Common prayer twice a month. Services with a particular theme are arranged periodically, such as Remembering Loved Ones, Evensong, Carols by Candlelight and Midnight Communion. It has a strong ethos of prayer and is open daily to the public.



One of our priorities is the care for the elderly and the lonely. Members of our congregation visit the housebound, those in care homes and hospital.



There are two closed graveyards and a very open memorial garden for the interment of ashes. There are war graves and other memorial stones of interest. Following the achievement of a Silver Eco award, we are actively developing these areas as places for prayer and the encouragement of flora and fauna. We are part of the Living Churchyard scheme.



### The Old School Room



We are fortunate to have the Old School Room opposite the church for a variety of activities. Many local groups meet here and it is used for our coffee mornings, bereavement café and craft group.

The Guide company meet there and we are delighted that the girls take an active part in a Sunday morning service on a monthly basis.



### Our People in Radipole

St. Aldhelm's and St Ann's are strong, traditionally evangelical and have drawn people of similar persuasion from different church traditions over many decades. This varied experience provides a deep spiritual resource which inspires what we do. Individuals choose to join groups such as Spring Harvest, New Wine and The Gathering, the Diocesan Evangelical Fellowship and other similar gatherings. Strong bible-based teaching is a feature of our worship. At St Aldhelm's there is a wide age-range of members although the 20-40 age group is less well represented. Since the inception of B@9, a fresh expressions congregation has built up, popular with younger families. St. Ann's has a strongly committed, mainly older congregation that is active, loving and serves the local community.

Finance has become an issue as elsewhere in the nation. We are pleased we are able to pay our parish share and maintain our level of mission giving; but we have had to appeal for regular giving to increase to maintain our commitments.



### During the vacancy

Steady growth in Radipole has continued and our approach of 'every member ministry' proved a real strength. A group of LPAs and hospital visitors meets regularly to review and plan pastoral support, while prayer for others is coordinated and circulated online. Prayer support is offered after services. At St Ann's we hold monthly community mornings which are very well attended; a monthly Side-by-Side café which serves the lonely and bereaved of the district. This church hosts an annual open weekend in the summer which includes a concert, evensong, flower festival and graveyard walks.



Many people belong to Lifegroups which offer biblical study, prayer time and support for one another. @The Helm Café held in the lounge of St Aldhelm's and the monthly coffee mornings at St Ann's are popular, bringing in community and deepening fellowship. Blokestime, Friday Friends and other activities provide social occasions and ways to introduce non-church people to who we are and what we do.

This includes the annual Fun Day where the local community can enjoy having fun in and around the church without being asked for money. At Christmas we regularly open our doors to those who would be alone or who cannot provide a festive meal for themselves, and a wonderful meal and a variety of activities ensure they enjoy a happy Christmas Day.

### Worship

At St Aldhelm's worship on a Sunday begins at 9am with fresh expressions Breakfast@9, congregations ranging from 28-50. Breakfast is shared and moves into a version of a service of the word which is informal and engaging for everyone. Although initially set up to encourage young families and those not used to church, the congregation ranges from a few months to over eighty. Some of these have special needs of one kind or another. All are warmly welcomed and included in our informal setting. We always ensure that the service ends at 10am so that families know they can then move on to other commitments.



Next is the 10.30am with an average congregation of 85-105 adults and a few children. Services are flexible but based on Common Worship and Holy Communion takes place usually on the third Sunday of the Month. Fellowship is encouraged over coffee in the lounge after the service. Morning services are often signed and particular attention is given to those who have special needs.

A monthly Encounter Service attracts people from across the town and is an opportunity for deep, exploratory worship in the context of contemporary music and prayer.

Tuesday morning communion has a congregation of about 15 from both churches. Numbers here have been increasing. Prayer and praise is run each Tuesday evening and there is an online prayer group.

Teams from our churches also hold short services at local Residential Homes in the district on a regular basis. Our Christingle and Christmas candlelight carol services at both churches and a Midnight at St Ann's are very popular in our communities, filling our churches.





### Worship

At St. Ann's the 10.30am Sunday service is attended by 20-45 and alternates between the BCP and Common Worship with Holy Communion each second Sunday; a monthly parade service is attended by Guides who present their flags and contribute to worship.

Morning Prayer is held twice a week across both churches and St Ann's church is open from 9am-4pm every day for personal prayer and meditation.



We continue to stream our 10.30 Sunday service at St Aldhelm's, for which there is a good following. The AV team are an essential feature to help maintain a quality of presentation and during lockdown all combined to provide an essential way to worship together though separately - and in fact brought growth from online visitors who later came along in person. The Music Group is very talented and leads worship with contemporary as well as more traditional music and underpins so much of how we respond to God's word.

The website is under constant review and we look to develop this area further - and if visiting for the first time, it gives a very helpful over-view of our district and the parish as a whole.

We very much look forward to our next Rector bringing new insight and a fresh stimulus to our life as a worshipping community that is vibrant and outward looking, and where the Holy Spirit is our constant well-spring.

### Children and Young People

B@9 is popular with families with younger children, although some teenage youngsters also attend, four of whom were recently baptised by full immersion in our baptistry. There is a youth alpha group led by both our Children and Families Worker and our Parish Youth Pioneer. We try to hold a Communion service at least three or four times a year at Breakfast @9. On the 5<sup>th</sup> Sunday of each month the 10.30am service has a CYP group held during the service.



Guides and Brownies are attached to both churches. Both churches are well-resourced for children. Friday Fun Club and activities such as film nights are also part of our current offering. A recent development is the linking of this congregation with a YWAM family working in Albania and we hope to form close relationships with them and maybe even visit!

Laura Lark, our Children and Families Worker regularly leads Collective Worship in the local primary school as well as going into classes to give the Christian point of view. She also comes along to Toddlers to chat to young mothers and to form bonds with them. With her input we are attracting more young families and some older ones. It has been a real encouragement to see more of the adults and young people taking on roles in the running of the services. Film nights are a big attraction for families as is the Christingle service held every Christmas Eve and we always have a packed church full of people from babies to grandparents who all hear the wonderful news of Christ's birth, (without the penguins and lobsters so often included!)



## Radipole District

### Our Mission and the Local Community

A number of groups are run in order to reach out to the local community and support our own church family. Hospitality and care for one another, reaching out with the love of Jesus is core to all these, which include:

*Toddlers*  
*Friday After School Club*  
*Holiday Clubs*  
*Light Parties*  
*@The Helm café (St Aldhelm's)*  
*Monthly Community Coffee Morning (St Ann's)*  
*Warm Welcome*  
*Blokes Time*  
*Ladies Nights*  
*Friday Friends*  
*Side-by-Side Café*  
*Community craft group*  
*Weymouth & Portland Foodbanks*  
*Family Matters*



### Our Commitment to Town-wide Ministries

Many members are actively involved with our town-wide ministries, detailed later in the profile.

### Our Commitment to Wider Mission

A tithe of income is shared between 12 missions, currently CMS, Tearfund, Afghanistan, London City Mission, the Town Centre Chaplain, CPAS, The Lantern Project in Weymouth, the Sudan Link, CAP, Barnabas Fund and Christian Hope International. We hold a Radipole Young Persons Mission Fund, also support YWAM in Albania through B@9 and The Children's Society through Christingle services. Recently attached to our church is the locally active One World Group which contributes to our mission giving.

### Challenges

Radipole DCC has identified the following challenges:

1. Identifying missional opportunities and growing church community
2. Further developing links with Radipole Primary School at both churches
3. Maintaining our buildings as fit for the purpose for future generations

### Church Wardens: Richard Sloan (St Aldhelm's) and Liz Bartlett (St Ann's)

So that's something about the Radipole District where our new Team Rector will be based and have particular pastoral responsibility but there are two other districts and the joint PCC for which the Rector will have oversight, though not with direct responsibility for day-to-day matters. Currently, the lay co-chair, Neil Biles, shares leadership of the PCC. And as you'll find throughout this Profile, it really is an every member ministry, and there is no expectation of the new Rector having to do everything! It will be a supported leadership model.

## Emmanuel Church - Southill District: Vicar Rev'd Jo Haine



Emmanuel church right in the heart of Southill is a community of people who worship God together, led by the Holy Spirit. We seek to follow Jesus and join God in His mission in the world longing to see God's Kingdom increasingly revealed in our community and lives transformed by Jesus. We aim to bless our community in God's love and welcome all who come. At our Vision Day in 2019 we felt God was calling us to be a church that is:

**Growing Younger, Growing Deeper, Growing Wider**

### Worship

We have an informal and friendly style of worship, recognisably Anglican with two services on a Sunday. Both serve their communities well and although each is very different there is a relaxed feel to both. Each service has a separate music group which reflects the worship style. Across the two services we welcome around 50 adults and children on a Sunday morning. At both services the church is set up in a café style with people sitting around small tables.



### Mission & Outreach

Emmanuel has good links with the local community, including: a thriving Tuesday Morning Coffee Shop after the midweek Communion service. Many come who have no other link with the church, including some who live alone and struggle with loneliness. Toddler Time on Thursday mornings sees parents, grandparents and carers bring preschool children for fun and activities. We hold regular services in Weymouth Manor Care Home and Southill Primary School holds services in church twice a year. Our vicar and curate are also invited regularly to school assemblies and class activities. Other community activities include Light Parties and Family Film screenings on our Big Screen, provide a way of building relationships with those who don't otherwise come to church. Services such as Christingle and Carols by Candle-Light also provide encouraging outreach into the local community. To find out more about who we are please visit: <https://emmanuelouthill.church>

**Church Warden: Julia Moore**



## St Mary the Virgin Church - Chickerell District: Vicar Rev'd Jo Haine



St Mary's Church Chickerell is the newest church to join the current Team Ministry. In 2022 a Parish Reorganisation took place and the Parish of Chickerell legally joined the Parish of Radipole & Melcombe Regis on 1st January 2023, making the Parish and Team Ministry what it is today. The church is situated in the heart of old Chickerell and continues to have a village feel. Recently, Chickerell has rapidly grown in size and is now a town on the west side of Weymouth. With further housing developments approved and more being planned, this growth will continue and will eventually lead to Southill and Chickerell merging. A wonderful opportunity for mission!

### Worship

Our worship style is traditional and Eucharistic. We believe that church should be uplifting and provide a meeting place where God's presence can be encountered in the Bible, Holy Communion and through our relationships with one another. Worship is at 9.30am Holy Communion every Sunday except the first Sunday of the month when we have a lay led service of Morning Worship. Holy Communion is also held on the first Thursday of the month.



### Mission & Outreach

Despite the limitations and location of the church building, we have good links with the local community. We are often present at events run by Chickerell Town Council and other community events running stalls, fundraising for the church, and raising the profile of the church. With coffee mornings, quizzes, soup and roll events, a bazaar and lots of cream teas, these events are not only about raising money for the church but also they provide a fantastic link with the local community. During the pandemic St Mary's church started a Chickerell based food bank, now based within a community building but run by the church. This continues to serve the most vulnerable across the district.

**Church Warden: Carole Loveridge**

## St Marys Town Centre and District: Vicar Rev'd Tom Coopey



St. Mary's Church is in the heart of Weymouth town centre. The church serves an area made up of a combination of local residents, town centre workers, rough sleepers, seasonal employees and a holiday-makers.

The Grade 1 listed Georgian building opened in 1817 and is the third church to stand on the site. The sanctuary of the church seats around 100 people in pews, has an impressive organ, modern AV facilities and historic art work. This space is flanked by converted and modern side rooms. One hosts The Mustard Seed Community Arts organisation the other is the base for the mission and outreach work of the church – headed up by our Town Centre Chaplain.

The church is led by a strong and committed team including Church Wardens, LLM, retired clergy and lay preachers, overseen by Revd Tom Coopey.

### Worship

The 11am service is characterised by Common Worship and Bible teaching together with traditional organ and contemporary music led by a worship group. The core congregation of around 30 is supplemented by holiday makers and occasional worshippers. We have seen encouraging signs of growth including some younger people. Known for its warm welcome, pastoral and prayer support, the church clearly proclaims God's word.

The 9am Breakfast church has grown since 2021 and provides hospitality to often needy people who appreciate the informality and support. It is informal, contemporary and discussion based.



### Mission

The town centre location provides great opportunities for mission and outreach. Having identified the Town centre as a Parish priority the Parish employs a Town Centre Chaplain (Neil Biles) with the vision is "To bring the Good News to Weymouth Town Centre and serve the local community." This mission is supported by people from around the Parish and is expressed in a variety of ways such as; hospitality, Life skills groups, CAP, concerts, Alpha courses, craft groups, drop-ins, community lunches etc. St Mary's is also the base for Weymouth Street Pastors. St Mary's is now a busy midweek hub for community activity.

**Church Wardens: Iona McLeod and Jean Smith**

## St John's Church - St John's District: Vicar Rev'd Tom Coopey



St John's has been a visible presence at the end of the Esplanade for over 160 years. The District includes part of the seafront, the Park District and housing based round the Dorchester Road. The ethnic, cultural and economic diversity of the area is increasing significantly. The congregation is made up of local residents and a number of people from other parts of Weymouth. Holiday-makers also often attend the church. The church aspires to excel in being a welcoming, worshipping, loving, serving and growing community.

### Worship

We have Sunday services at 9am and 10.30am. The 9am features Anglican liturgy, Bible teaching and traditional hymns and choruses. Sunday 10.30am is contemporary and informal with an emphasis on sung worship, Bible teaching and times of ministry. There are well attended groups for children and young people at 10.30am. All Age Services occur on special occasions and we hold Open Air Services during August. There is also a Monthly Evening Worship and Healing Service. A number of small groups meet through the week -providing supportive environments for faith and friendships to deepen.



### Mission and Outreach

The church runs a range of activities through the week including: Toddler group, Open Church, Community lunch, Prayer meetings, After-school kids club. In addition to weekly groups we run events for children and young people at various points in the year including a popular Holiday Club at Easter. The church has a committed Eco Team and an active team of LPA's.

We have a long-standing and excellent relationship with St John's Primary school; involved in Governance, Collective Worship, RE and staff training. We run a TLG mentoring programme in the school, engaging projects during the year and welcome the school into church for seasonal services.

The Park Church Centre is a Parish resource in the heart of the Park District. The centre is currently leased out to a local Charity who run a range of community services in the building. The church seeks to work in a supportive partnership with the Charity and are currently exploring new community and mission initiatives that could take place at the centre.

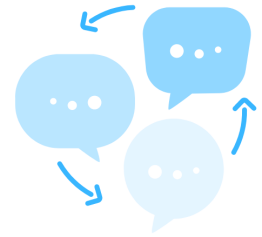
**Church Wardens: Pete Evans-Jones and Mark Foxall**



# The Team Ministry

## Working as a Team

The stipendiary clergy meet on Monday mornings for a much valued time of fellowship and support. Wider team meetings and socials also take place on a regular basis. As the size of the team has grown there is desire to continue to foster a sense unity and collaboration across the whole area.



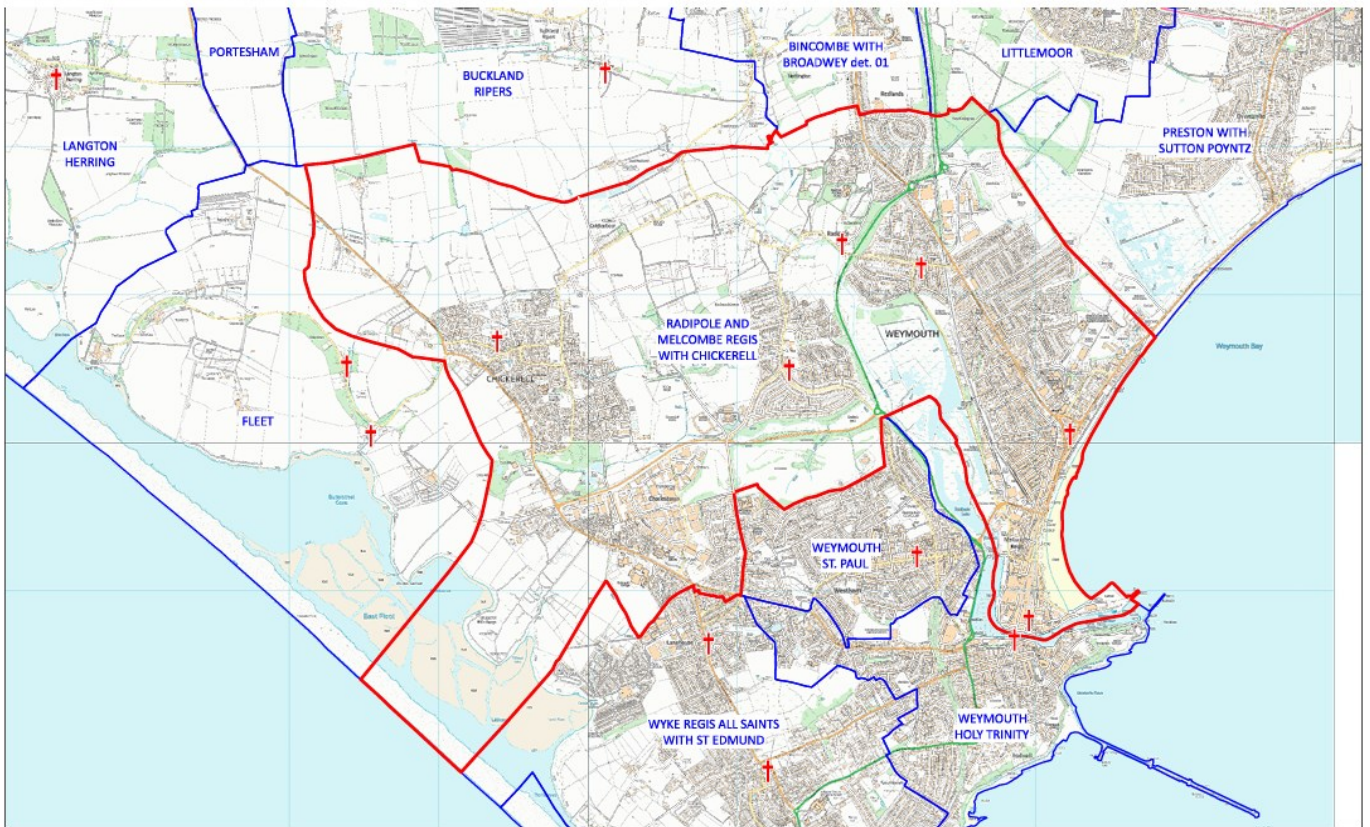
The Team have identified some key challenges:

- To develop creative approaches to evangelism in all of our contexts
- To continue to encourage, empower and equip lay ministry across the churches.
- To build on the good foundations laid in terms of work with children and young people
- To continue to develop a strong sense of unity and celebrate our diversity across the area.

## Map of the Parish of Radipole & Melcombe Regis with Chickerell

Below shows the area across Weymouth and Chickerell which the Team covers.

Benefice and Parish of Radipole and Melcombe Regis with Chickerell



This map was compiled for the Diocese of Salisbury by Alistair Sutherland in January 2024 with digital data from Field Dynamics. It contains parish data supplied by the Commissioners of the Church of England, church location data from A Church Near You, and Ordnance Survey data reproduced with the permission of Ordnance Survey on behalf of HMSO. ©Crown copyright and database right 2024. All rights reserved. Ordnance Survey licences nos 100040148 and 100019918. Please note that some legal parish names may be abbreviated for clarity.

## Resources

The team includes nine active retired clergy, licensed lay ministers and a number of people able to lead services and preach. All churches have a number of hard-working individuals who give their time in areas such as welcoming, catering, running coffee mornings or social groups, children's organisations, cleaning, flower-arranging, etc.

## The Team Ministry continued

### Finance



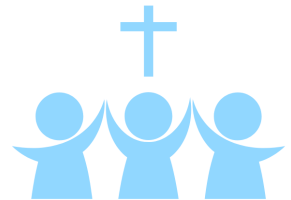
The Parish is currently able to pay its Parish Share regularly. Each district is responsible for its own finances and as with so many others, current financial circumstances pose a very real challenge. That said, significant funds have been found for necessary buildings works across the Parish: the Lord has blessed us at the point of need. For example, the tower at St Ann's has been renovated, a wonderful wall built by volunteers with materials paid for by donations and the Cox Trust, Hope House has been refurbished and work completed to upgrade St Mary's in the town centre. We are, however, needing to manage our finances with great care.

**Parish Accounts** for 2023 will be found at Appendix B.

In addition to congregational giving, Radipole District was the beneficiary of a large legacy, the basis of the Cox Trust. Its Statement of Purpose may be found online which govern the trustees carrying out their responsibilities. Most of its remaining assets are held in property which generates rental income. The Cox Trust owns the Team Rector's house and has been a major funder for building projects at both churches; it has also been able to support other churches in the parish. The trustees are the two Church Wardens and the Team Rector as minister of Radipole.

### Worshipping Together

Whilst the majority of the worship happens within each individual District, throughout the year we gather together to worship as a Parish and pray together. This includes regular Parish Prayer and Praise services, Ash Wednesday and Maundy Thursday Services.



### Parish Office



This is located in the Church Centre with an office and resource room. The Parish Administrator, Trudy Dickson, operates the Office for the whole Parish and supports Rev'd Jo in her role as Rural Dean. The Radipole Secretary Ruth Smith, line-managed by the Rector, works here one day a week. Also sharing the Office are Centre Manager Peter Bennett, line-managed by a member of the DCC, and Centre Assistants Liz Orrell and Mike Petitdemange.

## Hope House - Parish Youth and Community Hub



In Nov 2018 the Parish purchased the former St John's Vicarage. This large Victorian house, situated next to St John's Church, had been sold by the Diocese in 1981. When the house was put back on the market in Spring 2018 the Parish prayerfully committed to raising funds in order to buy the property with a view to developing it into a youth and community centre. The purchase came shortly after the Parish had identified children's and youth work as one of its three top priorities. The former Vicarage was re-named Hope House. A three- part strap line was also introduced: Renewing Hope – Sharing Faith – Showing Love. The vision provides a range of transformative services for children, families and young people.



### Hope House is...

- Our Parish base for Youth Ministry
- Open to all young people
- A support for families
- A place of collaboration and partnership
- Hope House serves the wider community

### Parish Youth Work at Hope House

- SJ Kids: Provides a nurturing environment for children during Sunday morning services.
- Ignite: Tailored for secondary age students, offering a space for fellowship and spiritual growth during Sunday services.
- Alpha Bible Study: Discipleship group for young people from across the Parish
- Connect 515: Open youth club for years 5 and 6.
- Hope House Youth Club: Open Youth Club for secondary school, aged young people
- Summer of Fun: Annual summer events consisting of weekly Friday outings and community service activities during the summer holidays.



Firm foundations have been laid for youth and children's work. Having invested in Hope House, having a committed volunteer base, a full-time youth worker and having strong partnerships with local schools we have the opportunity and the infrastructure to develop a high- impact ministry of outreach and evangelism amongst children, families and young people in Weymouth.

### Future plans for Hope House

- Develop Mental Health Support for young people
- Start a Detached Youthwork project
- Start a town-wide Youth Congregation
- Offer Internship Programs
- To resource youth work around the Parish and town
- To provide peer support and training for local youth

A range of other community groups and projects are also based at Hope House including 'Access to Wellbeing' a holistic community service run by The Lantern Trust.



## Deanery Introduction



The Deanery of Weymouth and Portland is one of the largest populated deaneries in what is predominantly a rural Diocese. It has a population of around 55,000 people and is continuing to grow with numerous housing developments and areas of proposed housing across the area. Weymouth and Portland is the location of many stunning beaches, a working harbour, the South West Coastal path, and beautiful nature reserves. There are also many opportunities for outdoor sports including excellent rock climbing on Portland and a variety of different water sports. During the London 2012 Olympic and Paralympic Games Weymouth and Portland hosted the Sailing events, highlighting how fantastic the opportunities are here for water sports.

During the summer season tourism brings many visitors to the area and the area benefits from the economic upturn that this brings. The Deanery is also located within the beautiful Dorset coastline with areas of outstanding natural beauty surrounding it, all of which make it a wonderful place to live and minister.

Alongside the beauty and areas of affluence, the Deanery also includes areas of significant deprivation, and like many seaside areas across the country, there is real need here. According to the Church Urban Fund, the majority of Parishes in the Deanery are identified as either among the most deprived or relatively deprived in the country. The Deanery is also the location of the Bibby Stockholm Barge and a relocation site for Afghan families who are being resettled in the UK. The Churches of Weymouth and Portland have a strong history of working together through Refresh. Through Refresh, community action has been made possible and we see this in the work of Christians Against Poverty (CAP), Family Matters, Warm Spaces and the Food Bank.

The Deanery comprises of 17 churches with a broad range of church traditions and is served by 9 clergy. As Rural Dean and Team Vicar in the Radipole Team, I believe this is an exciting time for both the Team and the wider Deanery. As a Chapter, we are working together to develop a refreshed Deanery plan for the next season, and we are excited to see what God will do as we continue to Make Jesus Known in Weymouth and Portland.

Rev'd Jo Haine

Rural Dean Weymouth and Portland

07432 222645

## Working in the Town



In 2008 the Diocese funded a Pioneer Ministry Post which was primarily about mission engagement with people outside of faith and the Church. It recognised the problems of working within a post-modern society where the Church can often be seen as irrelevant and with little enthusiasm for joining its structures or services. The project aimed to meet people 'where they're at', both physically and mentally, and create a positive awareness of God and the Church. In practice, this meant an incarnational and ecumenical approach which sought to serve the community.

The position of Town Centre Chaplain is currently being fulfilled by Neil Biles and as you will see from the St Mary's report and the notes below about REFRESH, there is a very active ministry in the town centre which has seen Christians of all backgrounds coming together to benefit our community.

Both St. Mary's and St. John's churches have strategic positions in the town centre to potentially develop the legacy of this ministry but members from all our districts contribute to this outreach, bringing the Gospel with an active, powerful message.

**REFRESH**, the Church of Weymouth and Portland in action. Charity no 1158394

Initiated from the Church leaders monthly prayer breakfast, and building on the churches of Weymouth and Portland working together in outreach for the 2012 Olympics (sailing events were here), REFRESH was set up as a charity on behalf of the churches coordinating service in the community in many varied ways.



The church leaders and REFRESH trustees continue to meet monthly for prayer and support. Community action initiatives which are part of REFRESH are Christians Against Poverty, Family Matters, Fresh Start, Life Skills, Keep in Touch and Warm Welcome. The churches also serve in many ways alongside REFRESH, providing an integrated service for those in need, including the Food Banks, The Lantern, Street Pastors, Feeding the Homeless, and more, and is well supported by the wider community. <https://www.refreshweymouthandportland.com> Revd Anni Douglas is acting coordinator.

## Schools Work

The Parish provides five Foundation Governors (including the chair) for St. John's CE Primary School which some of our younger children attend while some of secondary age attend our Deanery School, All Saints, in Wyke Regis (not in the Parish) where we also have the Chair of Governors and another governor at the school.



The governors at St John's are very actively involved with the school which recently was graded 'Good' with Outstanding in Early Years and have also just received an excellent SIAMS report. The Rev Tom Coopey is currently a foundation governor and there are close links between school and church.



In Radipole there have been regular links with the local primary school with links in school for RE lessons and assemblies as well as church visits. The St Aldhelm's Childrens and Families Worker, Laura Lark, goes in regularly and is supported by others from the churches.



Emmanuel also has links with its two local primary school and both Revd Jo Haine and Revd Dan Harland are invited in ministry into these schools.

## Living in Love and Faith

The Church of England has been exercised by the deliberations about the recently published Prayers of Love and Faith. We engaged closely with the debates and explorations, seeking the guidance of the Holy Spirit in what our approach as a parish should be. Consequently, we have arrived at the following positional statement, which may be an influencing factor for some applying to be our Rector:

During the summer of 2023, the Parish engaged with the Living in Love and Faith (L.L.F.) course published by the Church of England. We engaged with this process of learning together, listening to one another, and listening to God as part of discerning a way forward for the Church of England in relation to matters of identity, sexuality, relationships and marriage. From our discussions we recognise that across the Parish there is a diversity of views and we are, therefore, committed to fostering an environment where all views on these matters are heard.

As a parish we have affirmed that whatever your sexual orientation, whatever your theological views on this matter, *everyone is welcome in our church congregations*. Christians who are gay, bi-sexual or transgender should feel loved, pastored, disciplined and cared for. We lament the experiences of gay people coming to church and being made to feel that they are a problem to be solved, rather than people to be loved. We believe and affirm radical Christian inclusion.

As a parish we have also affirmed, in accordance with its evangelical heritage, our belief in the authority of scripture. As such we hold to the traditional teaching of the Church of England and its doctrine concerning marriage: that marriage is between one man and one woman, and that marriage is the proper context for sexual intimacy. We believe this to be the pattern given to us in the Bible and by Jesus himself in Matthew 19. Therefore, we believe and affirm radical Christian holiness.

We acknowledge the fact that the Bishops of the Diocese of Salisbury have signalled their respect for the individual conscience of all serving clergy in this matter.

As a consequence, this parish will not be offering the recently published Prayers of Love and Faith (P.L.F.). We recognise that the decision to use 'Prayers of Love and Faith' is a matter of individual conscience for clergy, it is our firmly held belief that the approval of the PCC should be sought.



**Now you've read through this parish profile, here's a reminder of the kind of person we're looking for:**

- someone at home and comfortable in an open evangelical and charismatic tradition which fully affirms and celebrates the ministry of women and men at every level of leadership.
- familiar with and generous towards a breadth of worship styles.
- committed to a ministry with Word and Spirit at its heart.
- committed to the Bible and a passionate and competent Bible teacher and preacher.
- open to the Holy Spirit and able to lead and encourage churches in charismatic ministry and mission.
- a visionary leader with a deep and infectious love for God and passion for the local church.
- proven to be an effective leader of a local church.
- able to think strategically and imaginatively about mission and ministry across the Parish.
- able to work effectively, supportively and collaboratively within our experienced clergy team and wider staff team.
- a natural encourager and enabler of others.
- a proven leader of effective mission and evangelism.

**COULD THIS BE YOU? IF SO, PLEASE GET IN TOUCH!**

This Parish Profile was produced by the people of Radipole & Melcombe Regis with Chickerell, Weymouth, Dorset, finalised in May 2024. To God be the Glory.

## APPENDIX A - THE RECTOR'S HOUSE

39 Icen Road, Radipole, Weymouth



The Rectory is a modern 5-bedroom house with ample parking and a generous rear garden. It is owned by The Cox Trust, the trustees of which are the two Radipole churchwardens and the vicar. It is well-maintained and was extended to the rear for a previous Rector.

The Rectory is a 5-bedroom house comprising:

**Ground floor:**

- Study: 5m x 5.4m;
- Cloakroom with toilet;
- Kitchen 4.8m x 3m;
- Dining Room 3m x 4m;
- Living Room 5.3m x 5m.

**First Floor:**

- Bedroom 1, 4.7m x 3.2m with dressing area and ensuite shower room;
- Bedroom 2, 3m x 3.5m;
- Bedroom 3, 2.9m x 3.7m;
- Bedroom 4, 2.4m x 2.7m;
- Bedroom 5, 2.4m x 2.8m.
- Bathroom and toilet.

There is garage at the front and a garden shed and greenhouse in the private garden which is largely down to lawn, shrubs and a small veggie patch.

## APPENDIX B - STATISTICS & ACCOUNTS

Population of Weymouth at 55,543 2021 census and in Chickerell a further 6,294.

### Electoral Roll 2023

Radipole	St Mary's Town Centre	St John's	Emmanuel	St Mary's Chickerell	Total
212	34	124	67	38	<b>437</b>

### Parish Share for 2023 Full financial statement available on request

Radipole	St Mary's Town Centre	St John's	Emmanuel	St Mary's Chickerell	Total
£112,819	£17,055	£ 43,799	£30,246	£ 18,409	<b>£ 222,328</b>

### Average Attendance at Sunday morning services 2023

Radipole	St Mary's	St John's	Emmanuel	St Mary's
150	28	145	50	22

### Occasional offices

2023	Radipole	St Mary's	St John's	Emmanuel	St Mary's
Thanksgiving	8	0	0	2	0
Baptism	9	2	3	2	3
Confirmations	0	0	0	2	0
Weddings	2	0	3	0	2
Funerals	29	1	13	7	11
Burial of Ashes	4	NA	NA	NA	6



## APPENDIX C - PARISH SERVICE MATRIX

### Weekly Service Times

	St Aldhelm's	St Ann's	St Mary's Town Centre	St John's	Emmanuel	St Mary's Chickerell
<b>Sunday</b>	Breakfast@9		9am Breakfast Church	The 9am	The 9.30	9.30am
<b>Sunday</b>	10.30am	10.30am	11am	The 10.30	The TEN45	
<b>Sunday</b>	Encounter 6.30pm Monthly			Praise, Prayer & Healing 6.30pm Monthly	6:00pm Meditative (4-6 times a year)	
<b>Monday</b>	8.45am Morning Prayer					
<b>Tuesday</b>	10.00am Holy Communion				8.30am - Morning Prayer  9.30am - Holy Communion	
<b>Thursday</b>		8.45am Morning Prayer				8.30am - Morning Prayer  10am - Holy Communion (1 <sup>st</sup> Thursday)
<b>Friday</b>						
<b>Saturday</b>						